

VILLA PINETA V NOVIGRAD

**SEA VIEW
SWIMMING POOL**



VILLA PINETA V NOVIGRAD

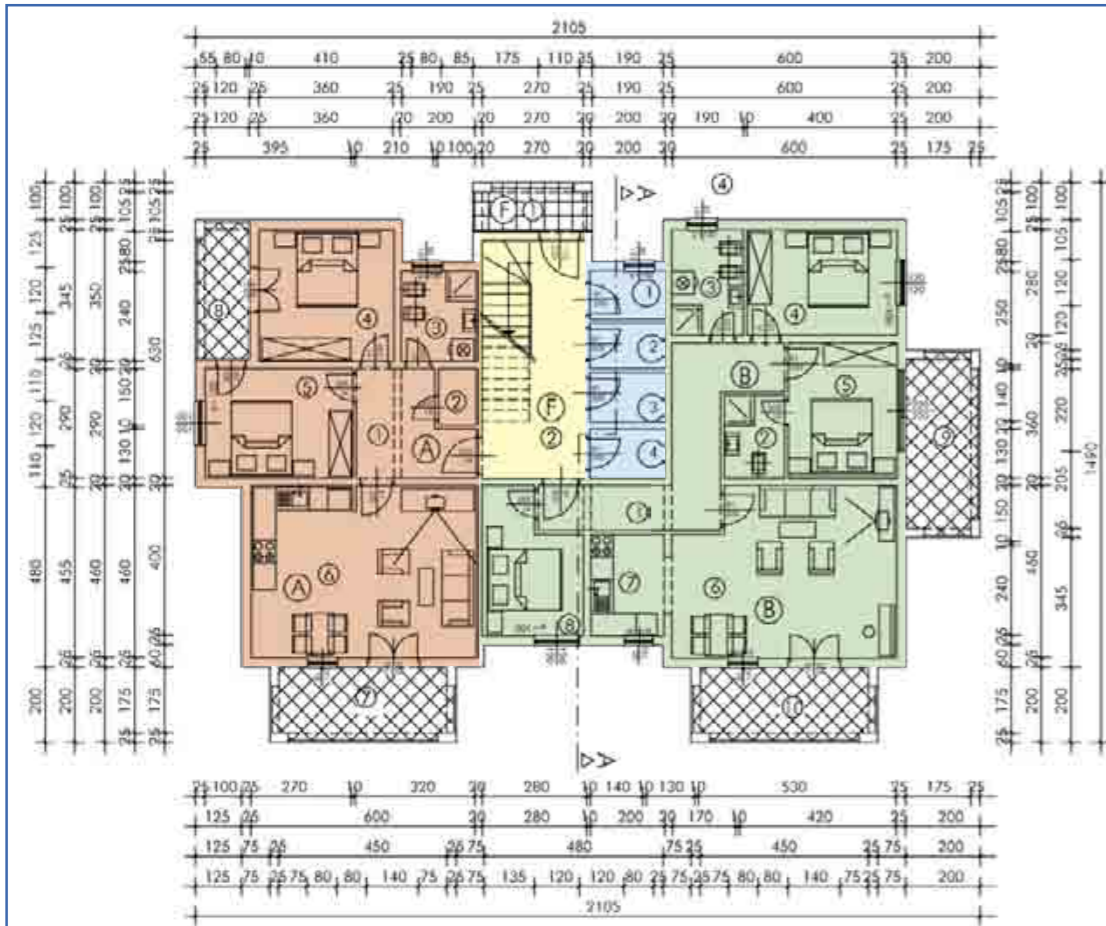


Novigrad, a medieval fishing town, is a well developed tourist resort situated on the west coast of Istria. Its many attractions include a new marina, restaurants specialising in local cuisine and a thriving café society. It boasts the clearest sea of the Adriatic and its well-indented coastline is easily accessible with its bays and stone and gravel beaches. It is the choice of many tourists and with its new marina soon to be completed will become the number one sailing destination. This unique old world town possesses a charm and ambience reminiscent of Venetian and Roman elegance.

Pineta V is a small development of both one and two bedroom apartments situated on an elevated site in Saini, the newest part of Novigrad and just 600m from the new marina and about a ten minute walk to the centre of Novigrad. The development will include a communal swimming pool and a management company will be put in place by the developers. Many of apartments has sea view.

Terms of sale

Reservation deposit of 10% of the purchase price will be payable with the balance in staged payments. (to be advised)



GROUND FLOOR 1:100

| FLAT "A" | |
|----------------------------|--|
| 1 | corridor 7,52 m ² |
| 2 | pantry 1,50 m ² |
| 3 | bathroom 4,80 m ² |
| 4 | bedroom 12,60 m ² |
| 5 | bedroom 11,46 m ² |
| 6 | living room + kitchen 27,55 m ² |
| 7 | lodge 75% 3,93 m ² |
| 8 | lodge 75% 7,12 m ² |
| TOTAL 76,48 m ² | |

| FLAT "B" | |
|----------------------------|--|
| 1 | corridor 13,03 m ² |
| 2 | bathroom 3,52 m ² |
| 3 | bathroom 5,34 m ² |
| 4 | bedroom 11,00 m ² |
| 5 | bedroom 11,20 m ² |
| 6 | living room + dining room 25,79 m ² |
| 7 | kitchen 5,40 m ² |
| 8 | bedroom 9,11 m ² |
| 9 | lodge 75% 7,12 m ² |
| 10 | lodge 75% 7,12 m ² |
| TOTAL 97,85 m ² | |

| COMMON PART | |
|----------------------------|--|
| 1 | porch 1,96 m ² |
| 2 | stair-case + corridor 50% 17,01 m ² |
| TOTAL 18,97 m ² | |

| PANTRIES | |
|----------------------------|----------------------------|
| 1 | Pantry 2,60 m ² |
| 2 | Pantry 2,40 m ² |
| 3 | Pantry 2,60 m ² |
| 4 | Pantry 2,54 m ² |
| TOTAL 10,14 m ² | |

